



Pike Transit Initiative

Overview of the Columbia Pike Alternatives Analysis Project



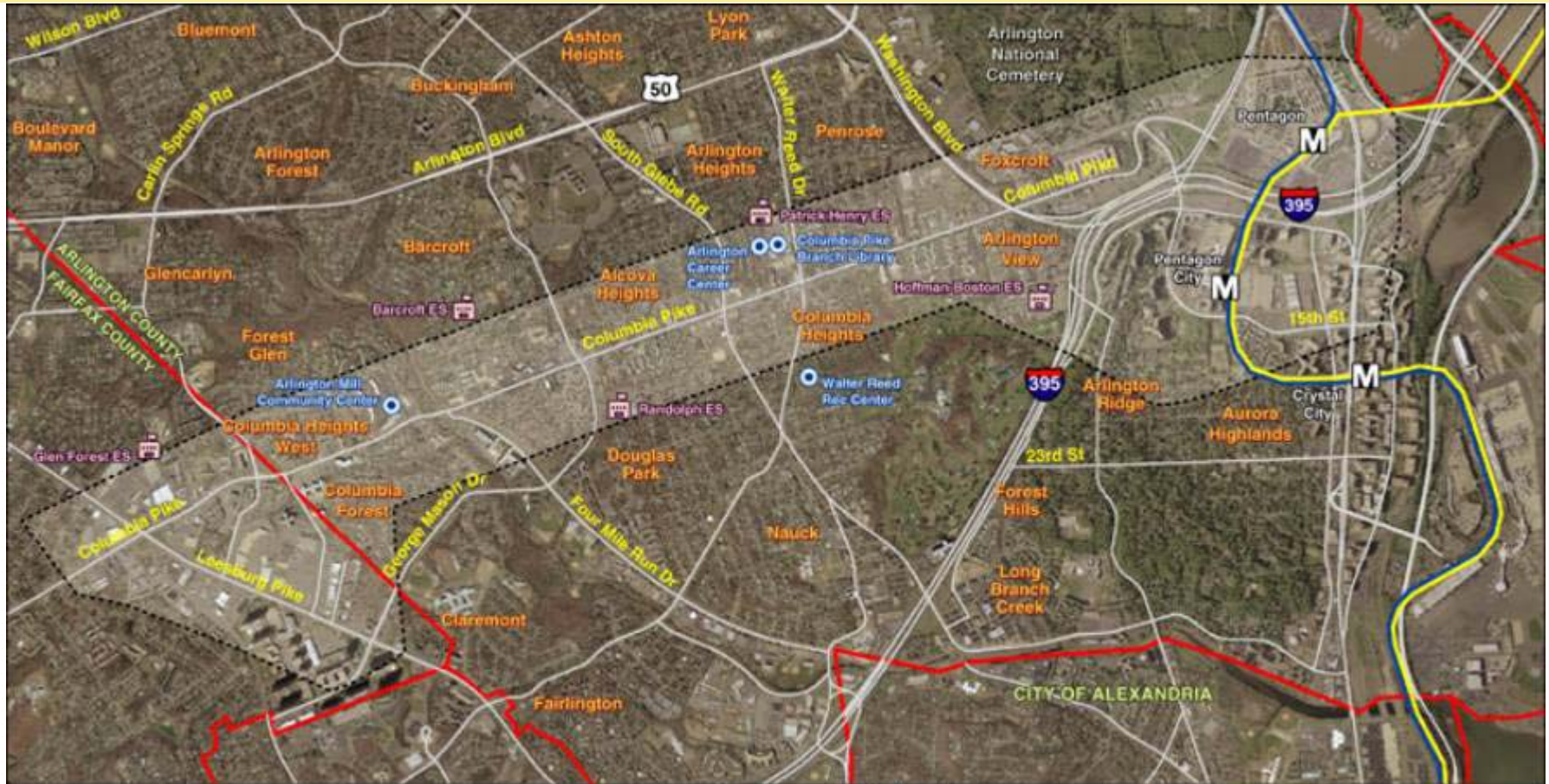
Presented by:

Washington Metropolitan Area Transit Authority (WMATA)
In Cooperation with Arlington and Fairfax Counties

March 2004








Pike Transit Initiative: Alternatives Analysis – The Starting Point





<p>LEGEND</p> <ul style="list-style-type: none"> Study Area County Boundary Community Facilities Schools 	<p>METRORAIL</p> <ul style="list-style-type: none"> Blue Line Yellow Line Metrorail Station 		<p>Pike Transit Initiative Study Area</p>
---	--	--	--

Pike Transit Initiative Goals

-  Increase mobility within the corridor
-  Contribute to and serve as a catalyst for economic development
-  Provide a safe environment for all modes of travel
-  Improve regional connections
-  Complement community goals to create a pedestrian-friendly main-street environment



The Pike Transit Initiative will:

-  Identify preferred technology, (e.g. bus rapid transit, streetcar, or light rail) alignments, and stop locations.
-  Estimate benefits and impacts of various alternatives





Getting Us to Tomorrow

Pike Transit Initiative Planning Process



DECISIONS		Related Arlington and Fairfax County and WMATA Plans
PREVIOUS WORK	Does the current system work?	Constrained Long Range Plan, 1998 WMATA Transit Service Expansion Plan, 1999 Northern Virginia 2020 Plan, 1999 10 Year Capital Improvement Plan, 2002
	What are the problems or needs?	Regional Bus Study, 2002 Columbia Pike Initiative-Revitalization Plan, 2002 Baileys Planning District, 2003
	What are the options? ← WE ARE HERE	Columbia Pike Phase I Study Columbia Pike Phase II Study, 2002 Pike Transit Initiative, 2004
NEXT STEPS	What are the costs and benefits?	<i>Environmental analysis and documentation</i> <i>Mitigation plan</i> <i>Identification of funding sources</i>
	What is the preferred option?	<i>Select locally preferred alternative (LPA)</i> <i>Environmental finding</i> <i>Financial plan</i>
	How can we get it done?	<i>Permits</i> <i>Funding</i>



Benefits and Challenges

(New Starts Criteria)



Criterion	Measure(s)
Mobility Improvements	<ul style="list-style-type: none">• Normalized Travel Time Savings (Transportation System User Benefits per Project Passenger Mile)• Low-Income Households Served• Employment Near Stations
Environmental Benefits	<ul style="list-style-type: none">• Change in Regional Pollutant Emissions• Change in Regional Energy Consumption• EPA Air Quality Designation
Operating Efficiencies	<ul style="list-style-type: none">• System Operating Cost per Passenger Mile
Cost Effectiveness	<ul style="list-style-type: none">• Incremental Cost per Hour of Transportation System User Benefit
Transit Supportive Land Use and Future Patterns	<ul style="list-style-type: none">• Existing Land Use• Transit Supportive Plans and Policies• Performance and Impacts of Policies
Other Factors	<ul style="list-style-type: none">• Number of optional factors, including economic impact of the project.



Pike Transit Initiative: Study Schedule



	SPRING	SUMMER	FALL	WINTER
Alternatives Development				
Design Dialogues				
Alternatives Evaluation				
Selection of the Locally Preferred Alternative				
Final Report				
Public Involvement Program				



Metro Tomorrow: Bus Rapid Transit (BRT)





Metro Tomorrow: Streetcar/Light Rail Transit (LRT)

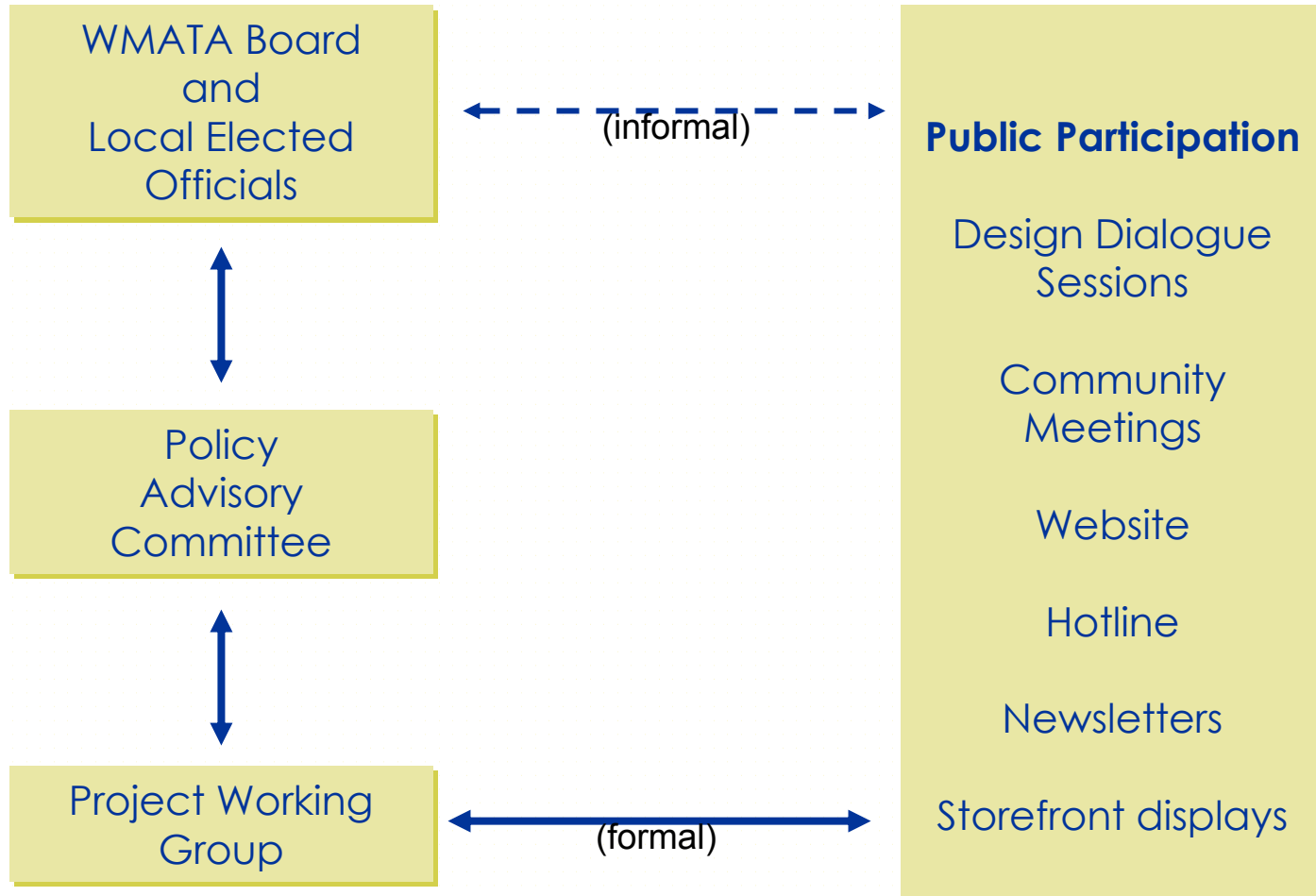




Columbia Pike Tomorrow:



Community involvement efforts will develop local consensus





How do I get involved?



ACTIVITIES	SPRING	SUMMER	FALL	WINTER
Briefings to Elected Officials				
Community Meetings and Events				
Design Dialogue Workshop				
Project Website and Hotline				



Additional Resources



- 📁 Pike Transit Initiative:
 - 🚗 Project website: www.piketransit.com
 - 🚗 Project hotline: 703-892-2776
- 📁 Transportation Planning and Transit Systems
 - 🚗 NTI Training Course: Managing the Environmental Process
 - 🚗 FTA (www.fta.dot.gov)
 - Technical Methods for Transit Project Planning
 - Major Capital Investment Projects (Final Rule)
 - Advancing Major Transit Investments Through Planning and Project Development
 - New Starts – An Introduction to FTA's Capital Investment Program
 - Guidance on Transit Financial Plans
 - New Starts Baseline Alternative and Review Process
 - 🚗 Transportation Research Board (www.nas.edu/trb/)
 - 🚗 American Public Transportation Association (www.apta.com)
 - 🚗 Washington Metropolitan Area Transit Authority (www.wmata.com)
 - 🚗 Arlington County (www.co.arlington.va.us)
 - 🚗 Fairfax County (www.fairfaxcounty.gov)